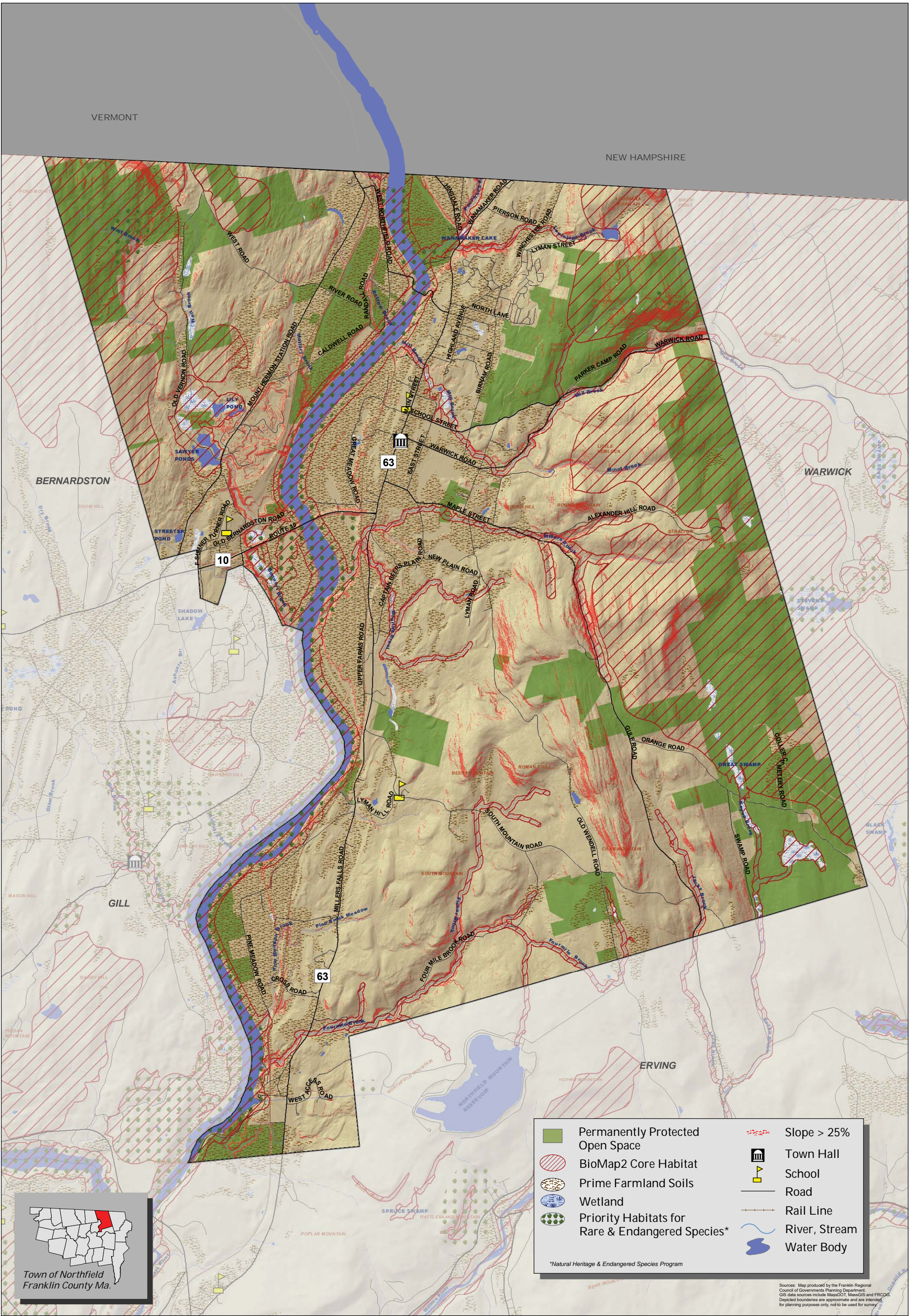


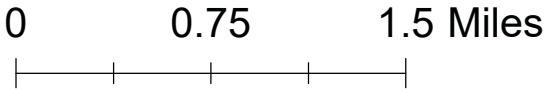
Town of Northfield
Open Space &
Recreation Plan 2019-2020

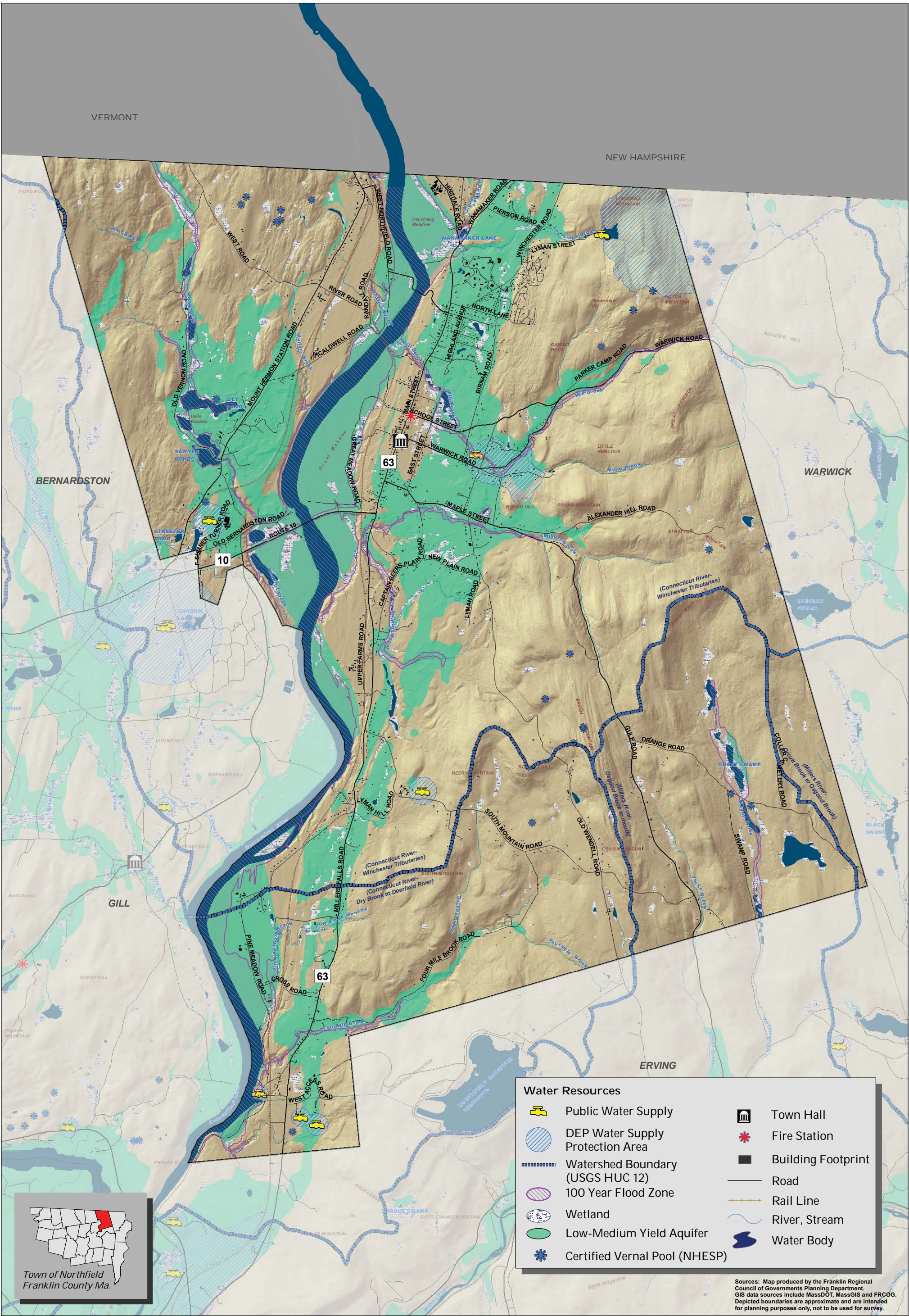
Regional
Context Map

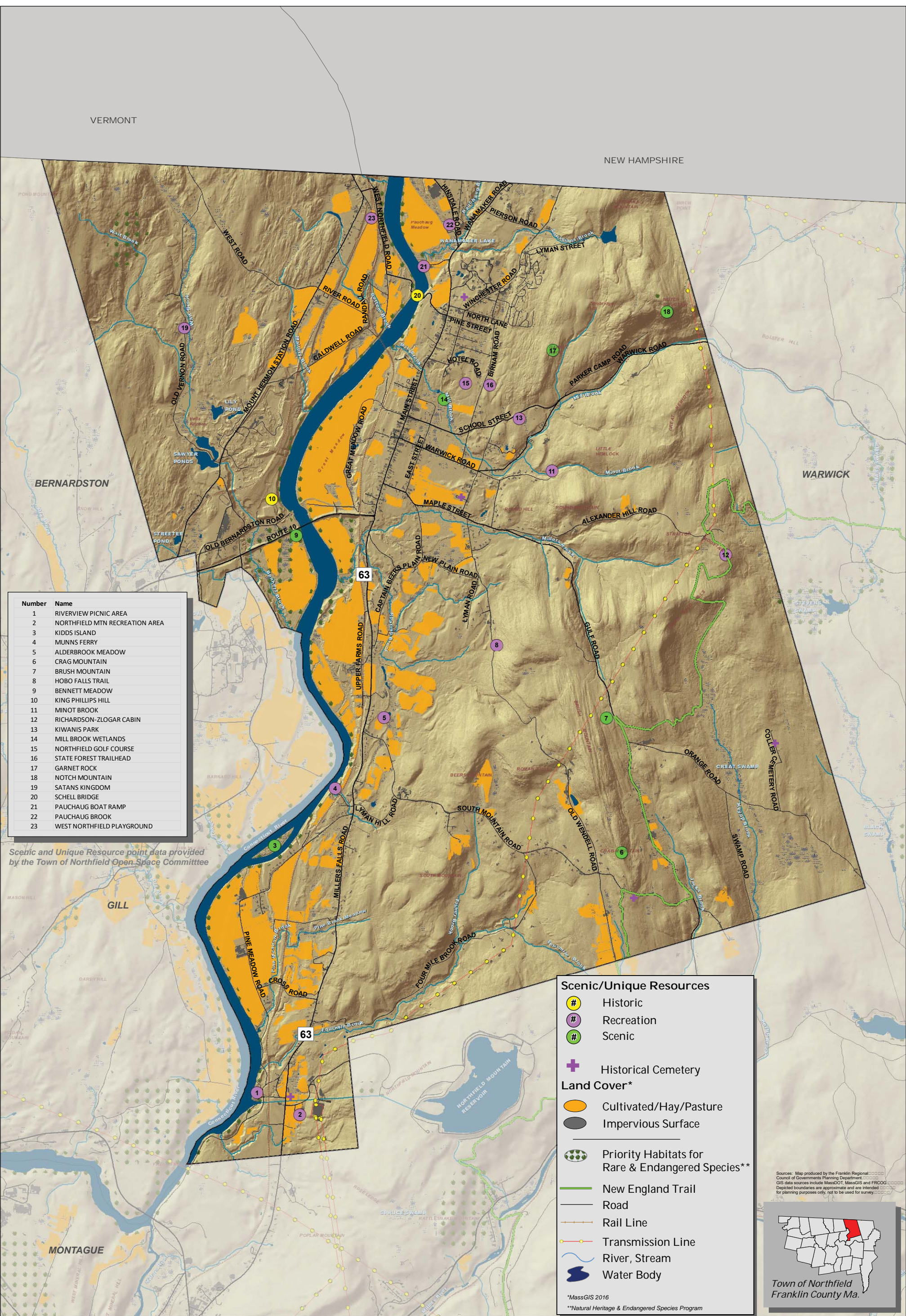


Town of Northfield
Open Space &
Recreation Plan 2019-2020

Soils & Environmental
Constraints

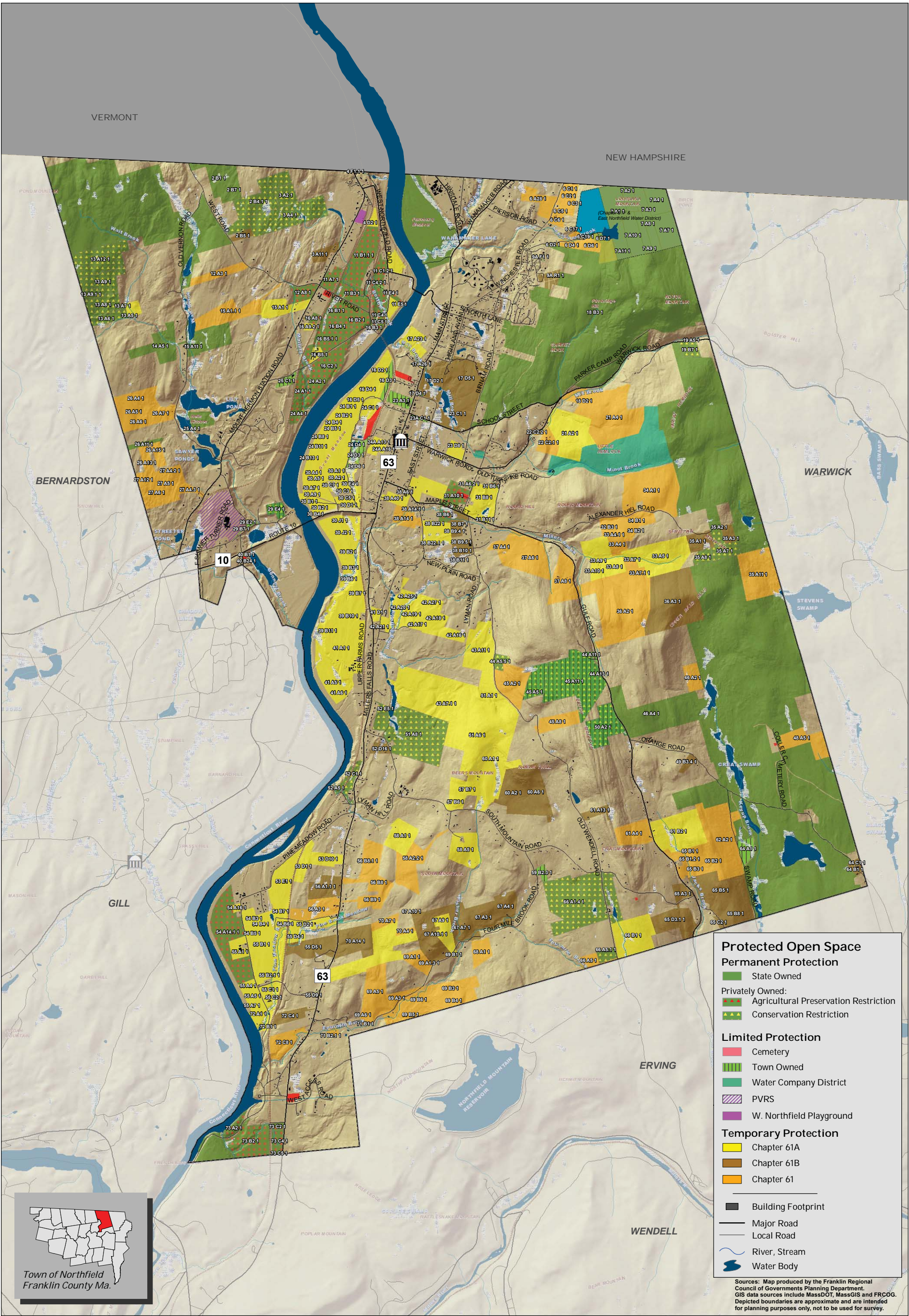






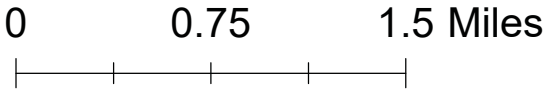
Town of Northfield Open Space & Recreation Plan 2019-2020

Scenic Resources & Unique Environments



Town of Northfield
Open Space &
Recreation Plan 2019-2020

Open Space



Post updated trail maps, opportunities for stewardship volunteers, and educational events on Nextdoor or local forums.

Continue to priotitize chapter 61 areas for the town to preserve should the land be removed from chapter 61.

Help provide land protection and estate planning information to landowners in the region.

Improve the shoreline access just north of the boat ramp at Pauchaug Brook for kayak/canoe launching.

Build a path connecting Schell Bridge to Pauchaug Boat Ramp

Maintain the Mill Brook trail, repairing stream and wetland crossings, and manage for invasive species.

Promote the Pioneer Valley Regional School Land Management Plan that encourages conservation, open-air educational options, and recreation on the school's land.

Build a canoe/kayak launch at Bennett Meadows Wildlife Management Area.

Propose accessible river-front walkways and river-viewing stations.

Increase access for swimming in the Connecticut River, working toward a riverside park.

Maintain the printed Northfield Trails brochure and the Northfield Trails website.

- Work on protecting areas identified by residents and/or BioMap2/ the Northfield Greenprint as high priority.
1. Mill Brook area.
 2. Crag Mountain; access to the New England National Scenic Trail.
 3. Any areas along the river that become available.
 4. Any land along Louisiana Brook that becomes available.
 5. Beers Mountain historic/ scenic viewpoint area.
 6. Bald Hills Area; ecologically important as wildlife corridor, scenic views.

Permanently Protected Open Space

Pioneer Valley Regional High School Property

Major Road

Local Road

Rail Line

River, Stream

Water Body